



# Business And Economic Development Committee Meeting

**June 8, 2023**  
**3:00pm**

Agenda

Meeting  
Minutes

Regional  
Airport  
Expansion  
Plans and  
Updates

## AGENDA

CareerSource Southwest Florida  
6800 Shoppes at Plantation Drive,  
Fort Myers  
June 8, 2023  
3 p.m.

- I. Call to Order**
- II. Welcome and Introductions**
- III. Approve April 13, 2023 Minutes**
- IV. Regional Airports Expansion Plans and Updates**
- V. Open Forum**
- VI. Adjournment**

## Agenda

## Meeting Minutes

## Regional Airport Expansion Plans and Updates

**BUSINESS & ECONOMIC DEVELOPMENT COMMITTEE MEETING**  
**CareerSource Southwest Florida**  
**\*VIRTUAL AND IN-PERSON\***  
**April 13, 2023**  
**3 p.m.**

**MINUTES**

**Members Present:**

Keitha Daniels – In Person  
Michael Wukitsch- Virtual  
Adrian Llanes – In Person

John Talmage – In Person  
Adrian Kerr- In Person  
Dave Gammon- Virtual

**Members Absent:**

Michael Dalby  
Rosemary Flori

Jim Lamb

**Guests/Interested Parties:**

James Parish, Punta Gorda Airport- Virtual  
Melanie Schmees, FGCU- In Person  
Dr. Aysegul Timur- In Person

Rick McCoy Airglades Int. Airport-Virtual  
Dr. Amir B. Ferreira- FGCU- Virtual

**Staff Present:**

Bill Welch, Staff Liaison  
Lis Scott

Peg Elmore

**I. CALL TO ORDER**

The meeting was called to order by John Talmage, Interim Chair, at 3:02 p.m. at CareerSource Southwest Florida, 6800 Shoppes at Plantation Drive, Suite 170, Fort Myers, via ZOOM and in-person. Role call was conducted and confirmed quorum.

**II. WELCOME AND INTRODUCTIONS**

John Talmage referenced the Committee Directory included in the meeting packet and welcomed everyone to the Committee. John briefly reviewed highlights from the previous meeting at the SWFL International airport and thanked everyone for their time and participation.

**III. APPROVAL OF MARCH 24, 2023 MINUTES**

John Talmage motioned for the approval of the March 24, 2023 minutes and Keitha Daniels seconded the motion and motion was unanimously approved by the committee.

**IV. PUBLIC COMMENTS**

Adrian Llanes stated that the Punta Gorda Airport has a new contractor. Things seems to be going in the right direction and he has heard a lot of positive things about it. Airglades International Airport is expanding after increase of flowers and fruits imports.

## Agenda

## Meeting Minutes

## Regional Airport Expansion Plans and Updates

Business & Economic Development Committee Meeting, April 13, 2023

Page 2

John Talmage also shared that 4 finalists were announced for the FGCU presidential search and Dr. Aysegul Timur is being considered as one of them.

### **V. SWFL EQUITABLE JOBS PIPELINE**

Melanie Schmees, FGCU, presented an overview on the SWFL Equitable Jobs Pipeline Grant. FGCU received \$22.9 million dollars in federal funding from the Economic Development Administration's Good Jobs Challenge. After regional economic research, the following industries were identified as high demands and will be the main focus under this grant: Healthcare, K-12 Education, Logistics and Manufacturing. As the grant progresses, we will be looking at adding additional sectors.

FutureMakers Coalition at Collaboratory is the subrecipient of this grant. They are responsible for wrap-around services, Navigators, Convener for unidentified skills gaps, RFPs. The Regional Economic Research Institute will be the grant administrator and will collect and report data. The Office of Innovative Education and Partnerships identified skills gaps and new programs.

Primary goal is training completion mainly through short term training programs and micro credentials leading to job placement and job advancement in the focus industries.

1700+ job seekers will be placed in good jobs which translates to above average regional rate plus benefits. This total will also include those placed in jobs without training completion. Not every engaged participant will complete the training.

Funding objectives are tuition, program development and wrap-around services which cover personnel, transportation assistance, training material, uniforms and childcare. For housing assistance we will rely on partners.

Individuals within other industries will also be assisted as part of the outreach approach. Navigators assist job seekers through the process, connect them with partners and services; and focus on job training and job placement.

Pipeline has 4 stages but major part is commitment to hire from employers. 2552 employers committed at time of application.

Over the next 36 months we expect formalized MOUs with employers and education/ training partners, skills gap analysis, program development and training (1800+ trained), training navigation and connection to jobs (1700+ employed), research and sustainability planning.

As part of our partnership engagement on June 21 from 7:30 AM to 12:30 PM we will be having the SWFLEJP Manufacturing and Logistics Summit at Collaboratory. The idea is to encourage employers within the targeted sectors to connect their workers with Program Navigators. Manufacturing and logistics employers will be invited to engage with Pipeline team.

Session will cover information about grant, training on best data practices, how can we build a better system for job recruitment and job retention.

We started with bigger employers, but once we have a better understanding of the process, we will connect with smaller businesses to join.



## Agenda

## Meeting Minutes

## Regional Airport Expansion Plans and Updates

Business & Economic Development Committee Meeting, April 13, 2023

Page 3

Timeline from September 2022 to August 2025.

### **VI. OPEN FORUM**

Keitha stated that EDA is looking to create additional child care sources such as certified in home child care due to the need for child care mainly in rural areas.

Adrian Kerr shared his concern about not having any training programs available for first line supervisors. Dr. Aysegul Timur stated that the issue has already been identified and FGCU is working on it. Grant is industry driven so the idea is addressing what industries are in need of but can't find in this market.

### **VII. ADJOURNMENT**

The meeting adjourned at 4:16 p.m.

### **VIII. UPCOMING MEETINGS**

Board Meeting 05/10/2023 3:30 PM

Business and Economic Development Committee Meeting 06/08/2023 3:00 PM

DRAFT

## **Airport Expansion Plans and Updates**

Naples Airport Authority

Lee County Port Authority

Airglades International Airport

Charlotte County Airport Authority







# **Southwest Florida International Airport**

## **The Business of Airports & Preparing for the Future**

**Business and Economic Development  
Committee for CareerSource**

**June 8, 2023**





# Business of Airports



# Business of Airports

- Airports are powerful economic engines that create prosperity by connecting people and businesses and generating employment opportunities across every sector.
- RSW is self-supporting and does not use local property tax dollars. As a forward-looking airport, we seek to diversify our revenues between aeronautical or airline derived and non-aeronautical, like Skyplex.



# Business of Airports

## National Impact



**10 Million**

Jobs



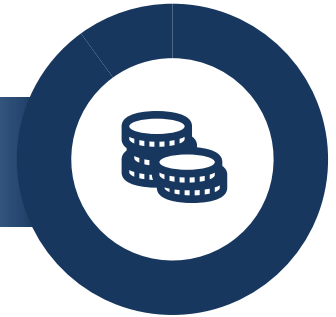
**840 Million**

Annual Passengers



**1.25 Trillion**

Annual Economic Impact

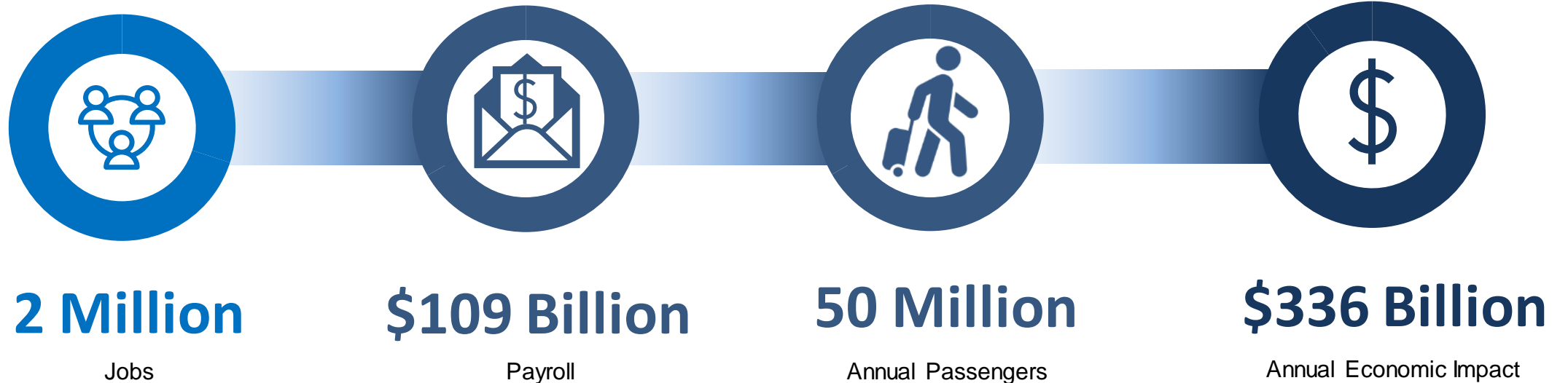


**5% of the**

Gross Domestic Product  
(GDP)

# Business of Airports

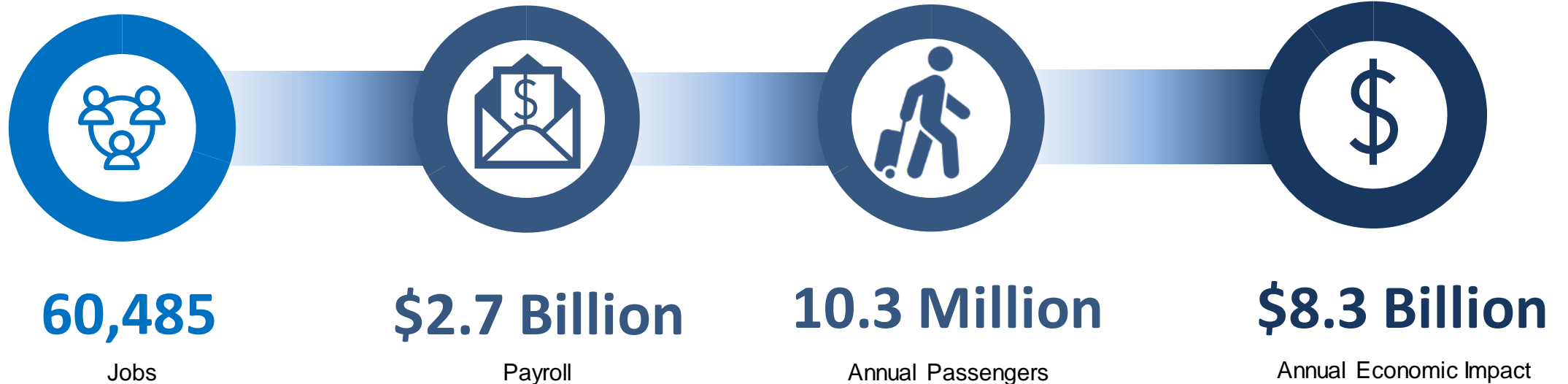
## State of Florida Impact



 **\$94.4B in Visitor Spending**

# Business of Airports

## Southwest Florida International Airport Impact





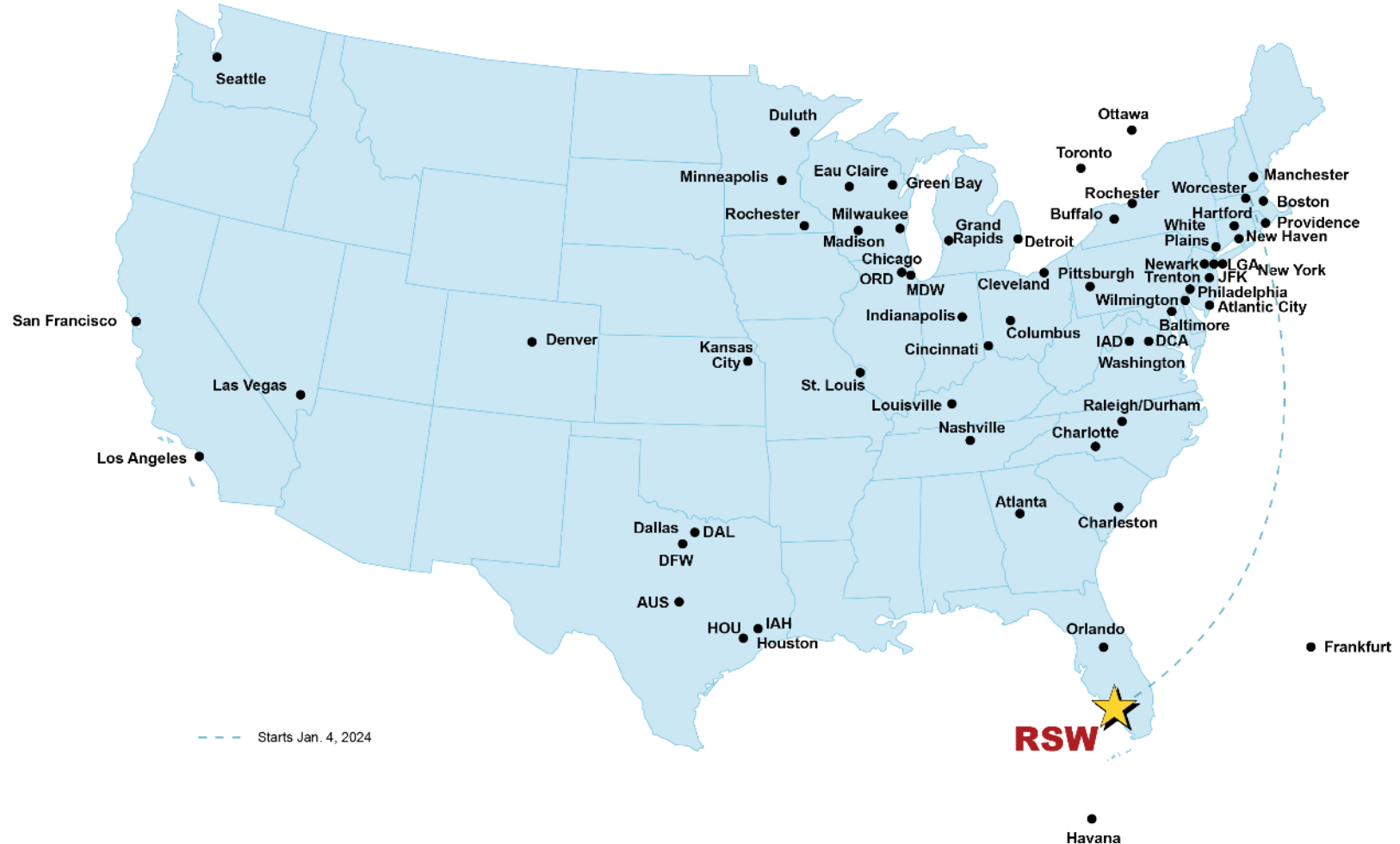
# RSW is the 33rd Busiest US Airport

Top 40 US airports ranked by TSA throughput for January through April 2023

Rank	Airport	TSA Throughput
1	Los Angeles Int'l	10,595,845
2	Orlando Int'l	9,090,453
3	New York John F Kennedy Int'l	9,066,871
4	Miami International	8,226,975
5	Chicago O'Hare International	8,070,751
6	Las Vegas McCarran Int'l	8,000,435
7	Atlanta Hartsfield-Jackson Int'l	7,961,220
8	Newark Int'l	7,384,985
9	Dallas/Ft Worth Int'l	6,951,602
10	Phoenix Sky Harbor Int'l	6,939,013
11	Denver International	6,848,481
12	San Francisco Int'l	6,594,052
13	Ft Lauderdale Int'l	6,284,363
14	Boston Logan International	5,987,368
15	Houston Bush Intercontinental	5,620,741
16	Seattle-Tacoma Int'l	5,255,226
17	New York La Guardia	4,844,727
18	Tampa International	4,118,679
19	Minneapolis-St Paul Int'l	4,024,876
20	San Diego Int'l Airport	3,836,010

Rank	Airport	TSA Throughput
21	Detroit-Wayne County Metro	3,833,502
22	Philadelphia Int'l	3,554,521
23	Washington Reagan National	3,272,233
24	Charlotte-Douglas Int'l Airport	3,191,229
25	Salt Lake City Int'l	3,097,263
26	Austin-Bergstrom Int'l Airport	3,018,576
27	Washington Dulles International	3,015,154
28	Nashville International	3,004,493
29	Baltimore/Wash Int'l	2,858,371
30	Honolulu Int'l	2,678,215
31	Portland Int'l	2,462,018
32	San Juan Luis Munoz Marin Int	2,211,720
33	Southwest Florida International	2,202,714
34	Raleigh-Durham	2,176,300
35	New Orleans Int'l	2,140,789
36	Chicago Midway	2,009,771
37	Sacramento International	1,913,907
38	John Wayne Airport	1,860,904
39	St Louis Lambert Int'l	1,839,095
40	Palm Beach Int'l	1,789,226

# 14 Air Carriers to 58 Nonstop Destinations



--- Starts Jan. 4, 2024



# Challenges

# RSW is the Highest Seasonal-Peaking Airport in the U.S.

- RSW is constrained with gates, concessions and passenger concourse capacity during the peak season (Thanksgiving through Easter)
- RSW has more than 4.25 times the traffic occur in March compared to September.
- Security checkpoints are extremely congested during peak hours and TSA needs additional screening space to conform to new standards
- To handle future increases in passenger traffic and aircraft operations, we are undertaking several large Capital Improvement Projects.





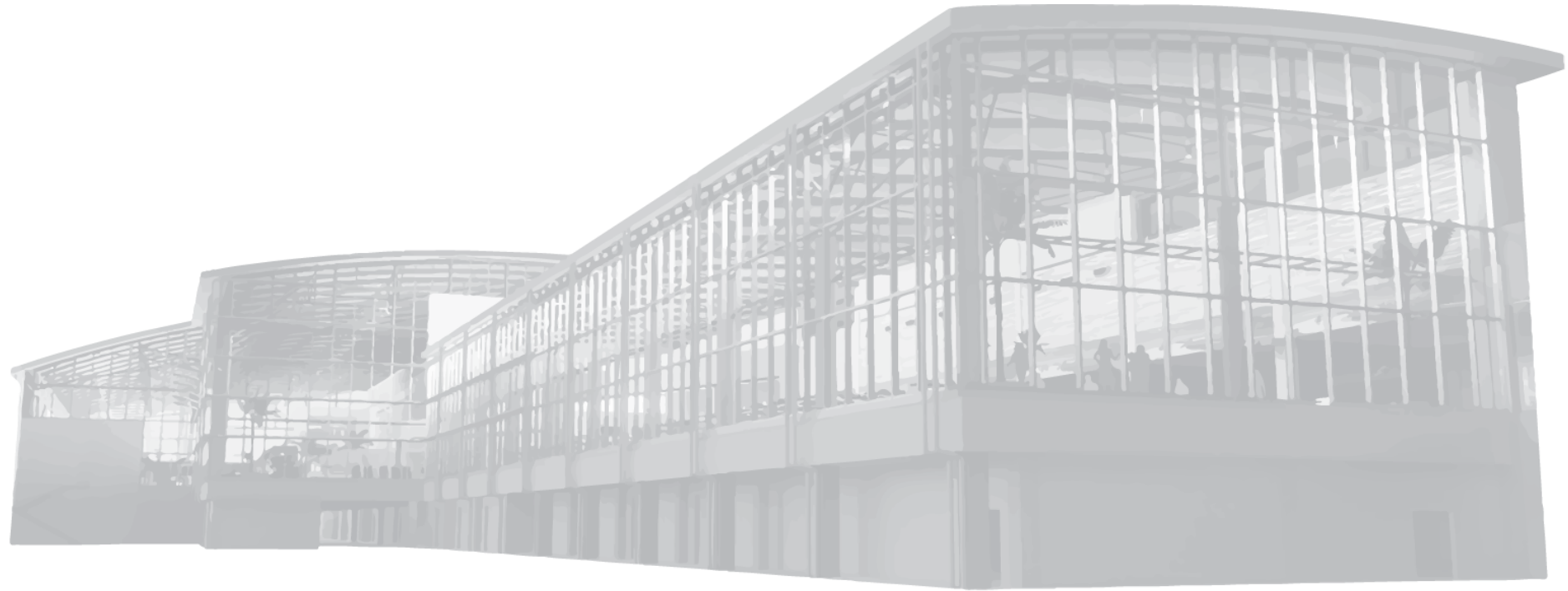


# **Solutions:** **Airport of the Future**

# New Airport Traffic Control Tower (ATCT) and Terminal Radar Approach Control (TRACON) Center

- Original tower built when the airport opened in May 1983. No longer met building codes and too small to handle the significant increase in flights at RSW in the past 40 years (from 43,000 annual to 101,000)
- Estimated FAA opening in 3Q23
- Designed to meet current hurricane codes (170 mph winds)
- State-of-the-art systems and technology
- Improves safety, enhances efficiency of air traffic at RSW and will reduce airspace congestion
- \$80M project cost. First tower in the U.S. built without federal funds
- Last piece of infrastructure required for the Parallel Runway Project





# REDEFINING OUR FUTURE▶▶▶

## RSW TERMINAL EXPANSION

# Terminal Expansion Project

## Consolidated Checkpoint & Added Concessions

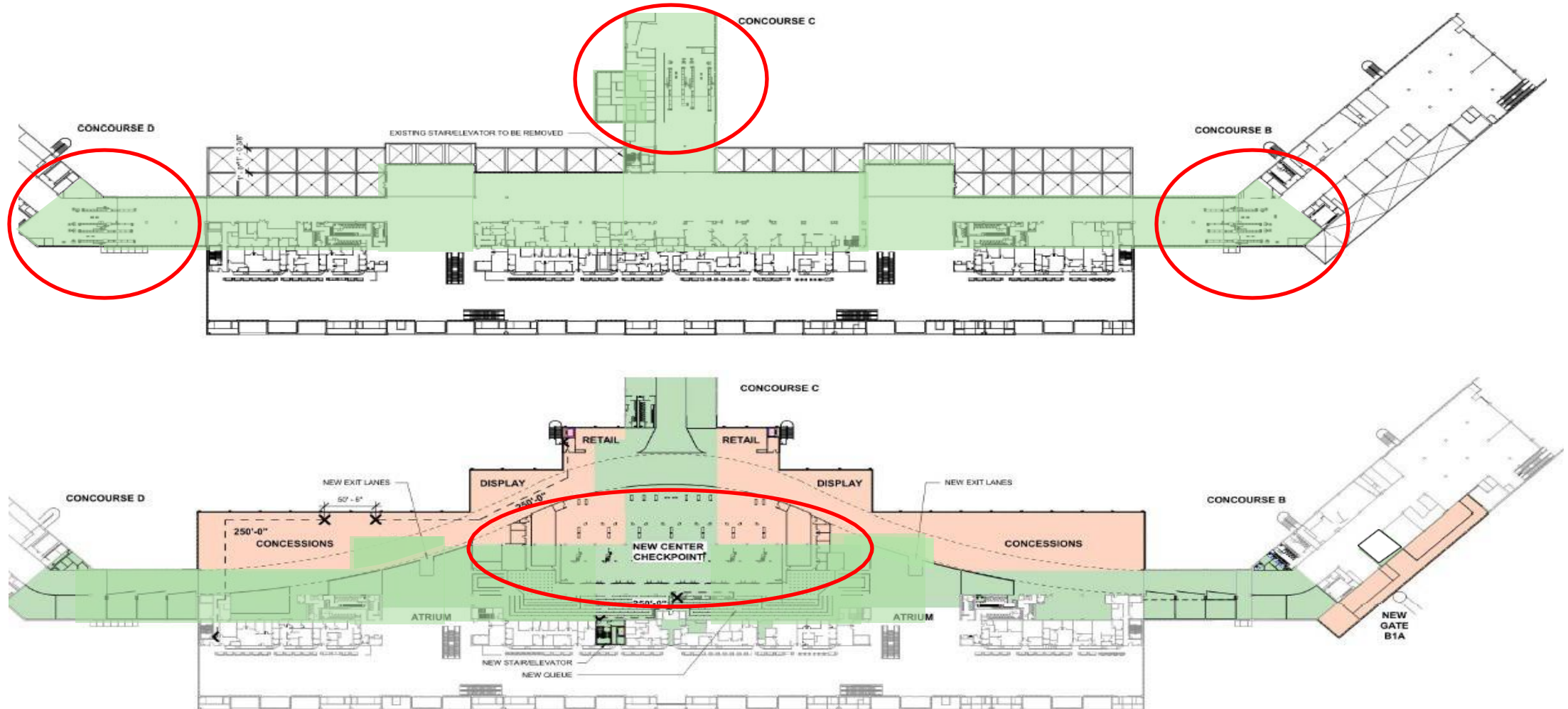
- Creates single TSA checkpoint
- Passengers will be able to walk between concourses
- Adds 164,000 square feet of remodeled space with 117,000 square feet of new walkways and concession space
- Three-year project with an estimated completion in late-2024
- Estimated construction cost \$331M
- Estimated 1,000 jobs created and average 200 daily workers





# Terminal Expansion Project

## Existing vs. Planned Expansion Phase 1



# Terminal Expansion Project

## Guest Experience – Consolidated Checkpoint



# Terminal Expansion Project

Guest Experience – Post Security and Re-composure area





# Terminal Expansion Project

## Guest Experience – Checkpoint Exit/Elevated Lounge





# Terminal Expansion Project

## Guest Experience – Concessions Area



# RSW Terminal Expansion 2 – Gates

## Existing Terminal



- Capacity Constraints
  - Feb - March
- Begin Design
- Target Completion 2027
- Estimated Cost \$700M+/-



# RSW Terminal Expansion 2 – Gates

Conceptual Renderings – Concourse E (Eventually 14 Gates)



# RSW Rental Car Facilities and Public Parking Expansion

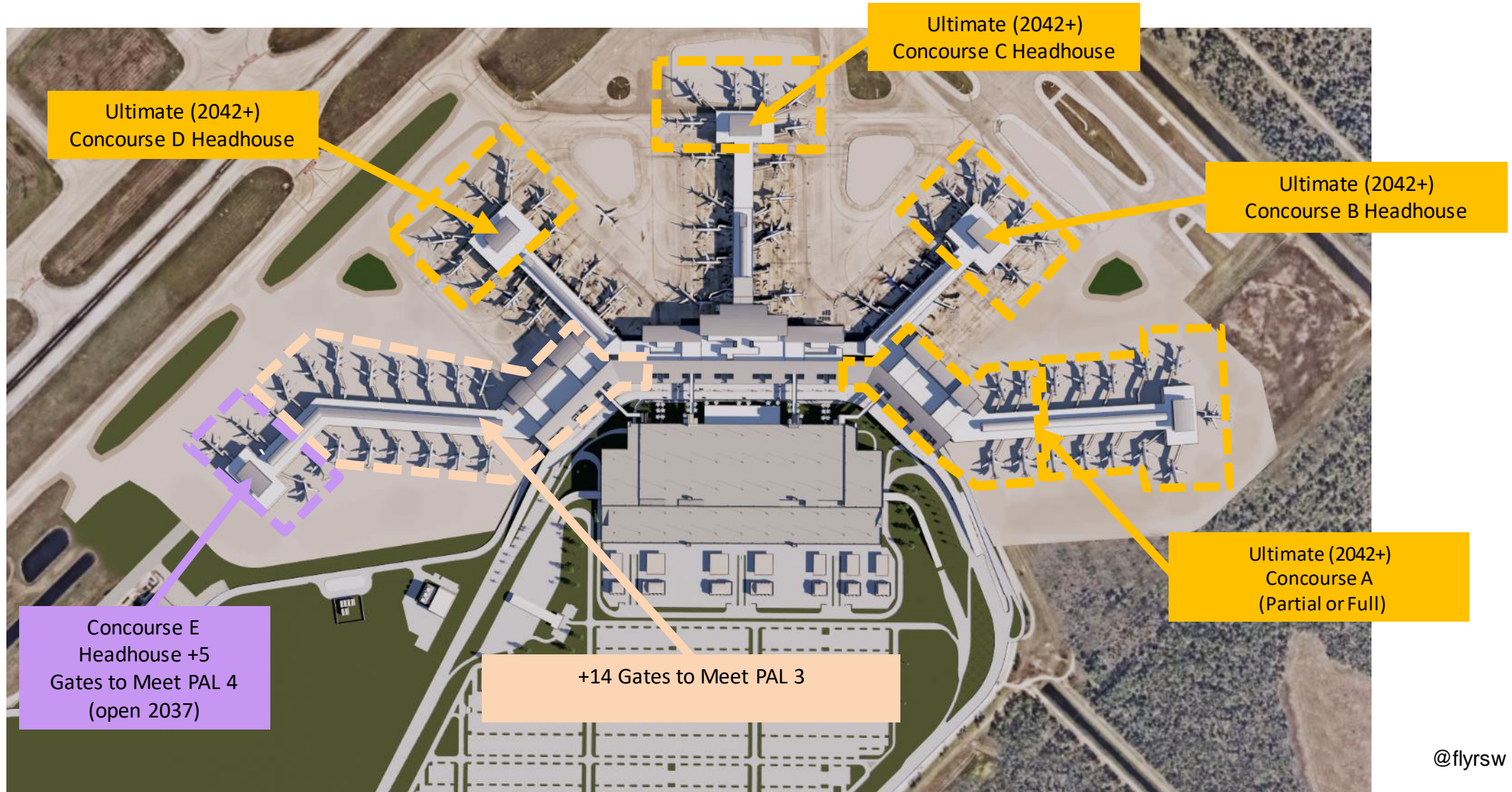
- Capacity Constraints
  - Thanksgiving and Christmas
- Begin Design
- Target Completion 2028
- Estimated Cost \$320M+/-





# Terminal Airline Gates

## Ultimate Build-out



# Future Parallel Runway

- A 9,100-foot parallel runway is planned
- Environmental permits have been secured and mitigation purchased
- Site Prep design is 100 percent complete
- Capacity need is not justified until 2043+

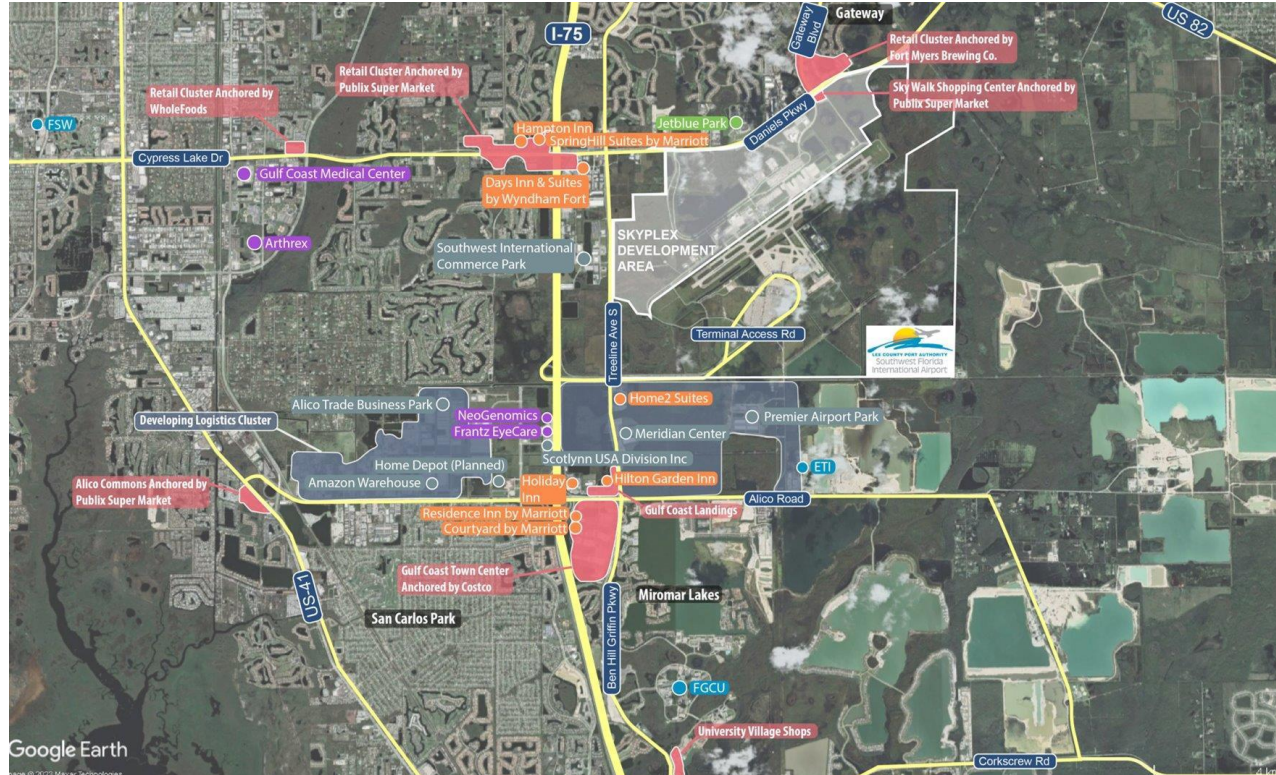






# Skyplex At RSW

# Existing & Emerging Site Context



- Retail Cluster
- Leisure
- Hotel
- Healthcare/Biotech
- Logistics
- Developing
- Logistics Cluster
- Education

***RSW Gateway is the convergence of new industrial and commercial development***



# Skyplex Opportunities

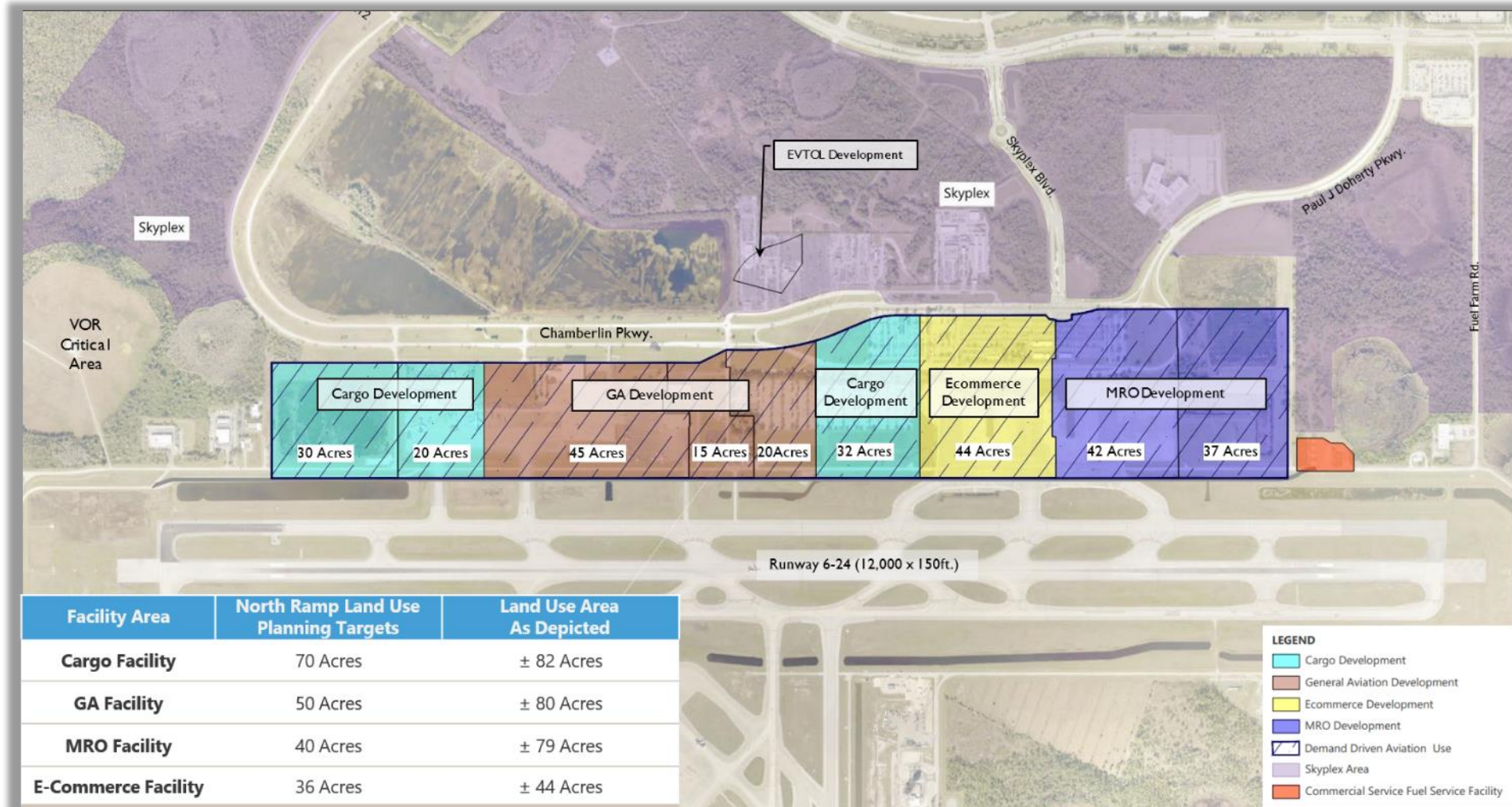
## Non-Aviation

- More than 1,100 acres of land
- Strong development characteristics
  - I-75 accessibility
  - Limited developable industrial land
  - High-profile tenants in the area
  - On the property of one of the top 50 airports in the U.S.
- Opportunities for
  - Retail including shopping, dining and entertainment
  - Campus-style office complexes
  - Hotels



# Skyplex Opportunities

## Aeronautical



# Long-term Outlook

- Successful local airports like RSW have a positive economic and social effect on a population that has access to a comprehensive transportation system.
- We are a global society and our airports connect Southwest Florida to the world.







# Questions?





# UPDATES & EXPANSION

Career Source: Business & Economic  
Development Committee

Gary Duncan – Chief Operating Officer





# PRESENTATION

- ▲ Airport Overview
- ▲ Commercial Aviation
- ▲ General Aviation
- ▲ On the Horizon

# STRUCTURE & LOCATION

- ▲ Independent special district
- ▲ Charlotte County Airport Authority Board of 5 elected commissioners
- ▲ Self-sufficient: No taxpayer \$\$
- ▲ Run like a profit/loss business
- ▲ Within Enterprise Charlotte commerce district (ECAP)
  - ▲ Two exits adjacent to I-75
  - ▲ County support: certified site program
  - ▲ Foreign Trade Zone
  - ▲ Utilities available











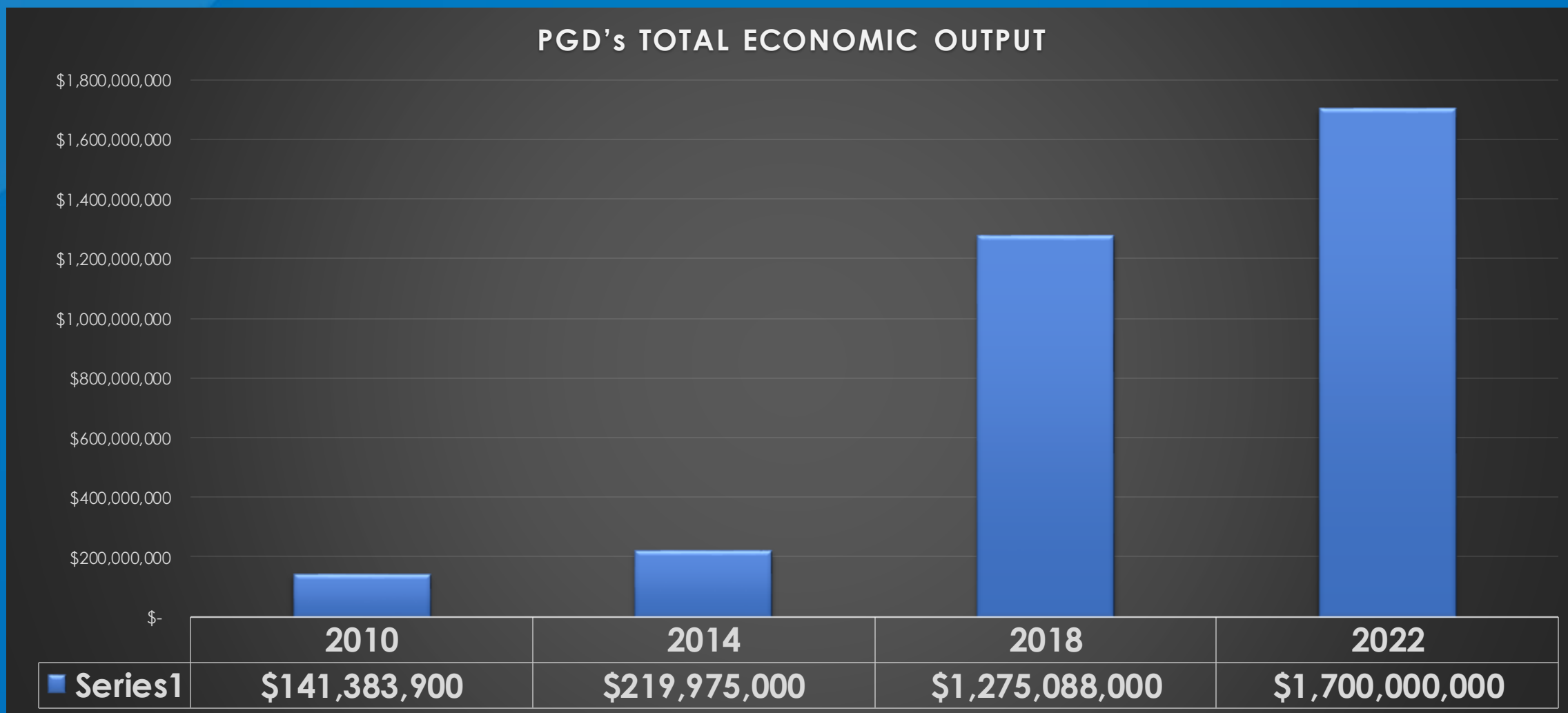


# PHYSICAL ASSETS

- ▲ 3 runways; 240+ daily operations
- ▲ ~400 aircraft; single engine to Airbus
- ▲ Terminal, hangars, corporate sites
  - ▲ 27 Aviation Tenants
  - ▲ 217 T-Hangars
  - ▲ 22 Non-aviation Tenants



# \$1 BILLION IN ECONOMIC GROWTH SINCE 2010



SOURCE: FDOT Statewide Aviation Impact Studies



# STRONG REVENUE STREAMS

- ▲ Airline-related (**75%**):  
Concessions, rental car,  
parking
- ▲ Other (**25%**): General  
Aviation, hangars, fuel,  
corporate tenants
- ▲ Strong Cash Reserves

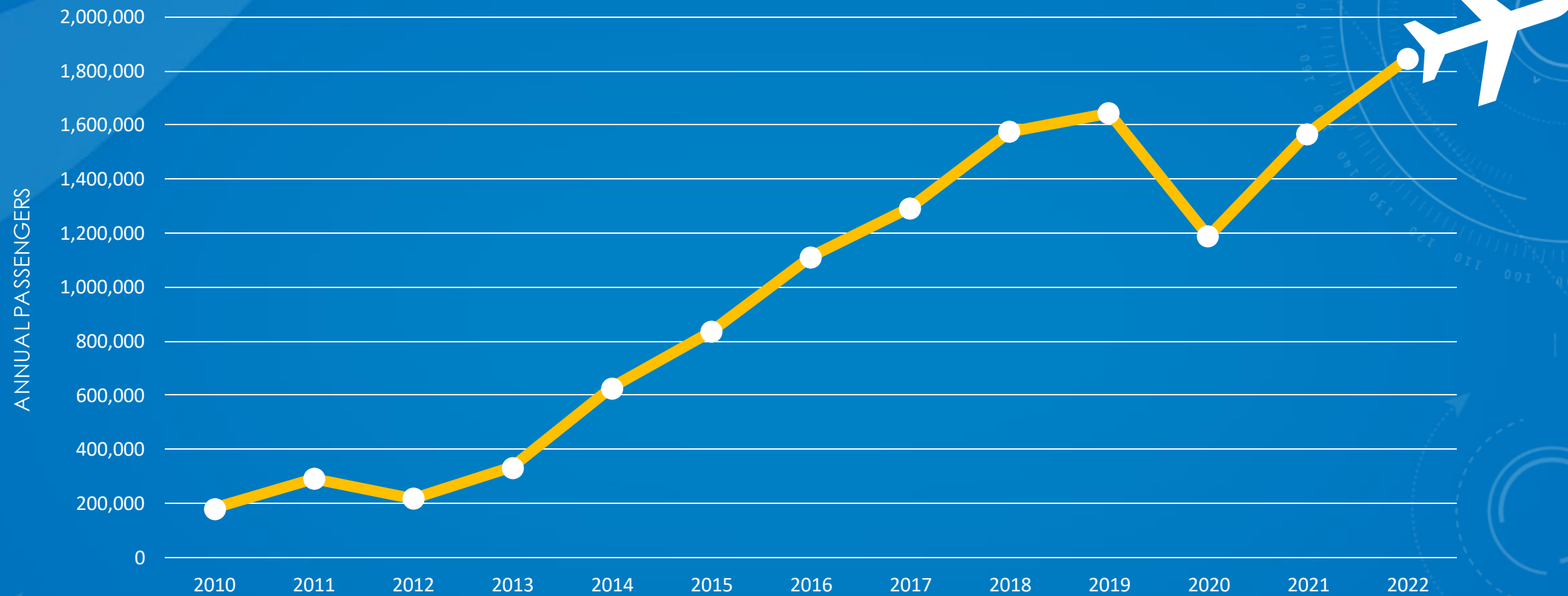




# COMMERCIAL SERVICE



# AIRLINE PASSENGER TRAFFIC AT PGD



**PGD'S 2022 TOTAL PASSENGER COUNT: 1,846,097 (17.6% INCREASE OVER 2021)**

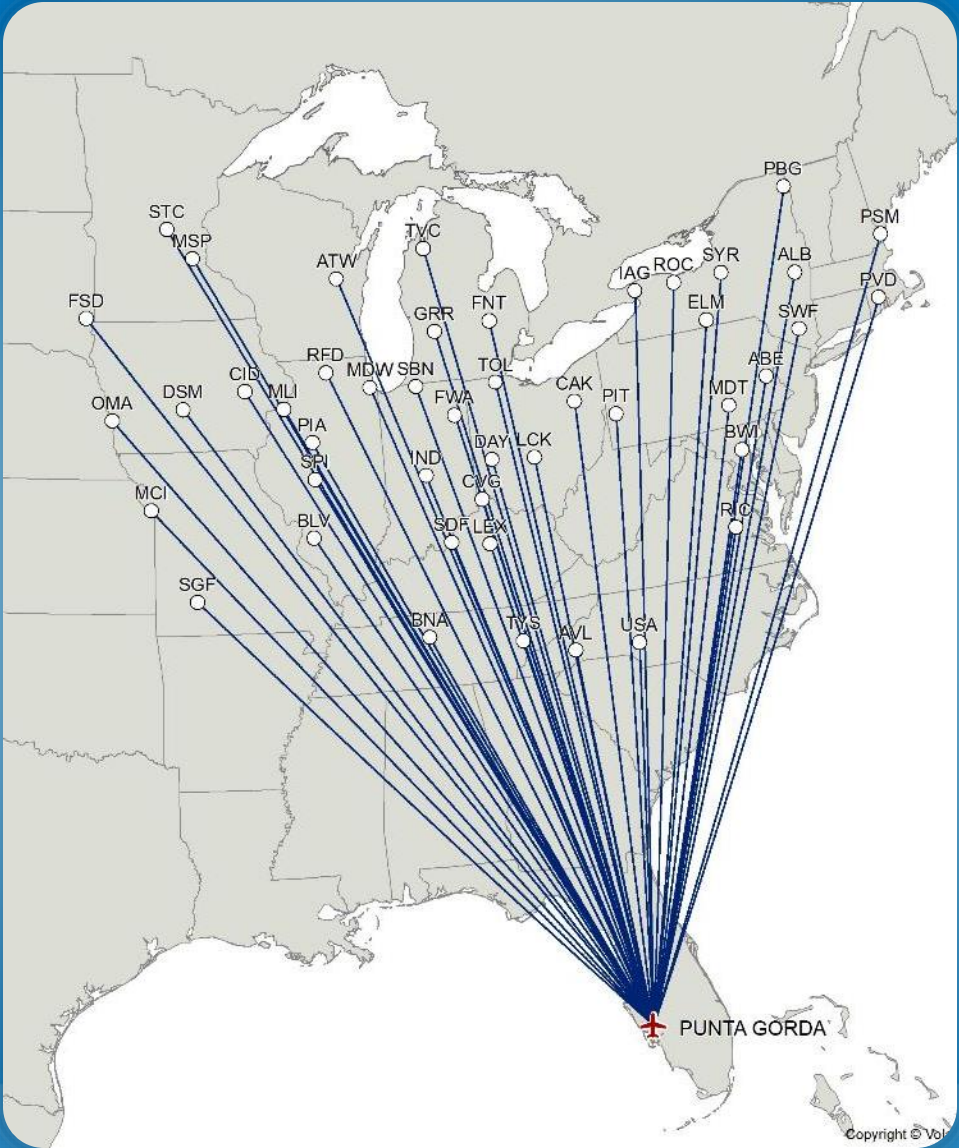




# 50+ DESTINATIONS

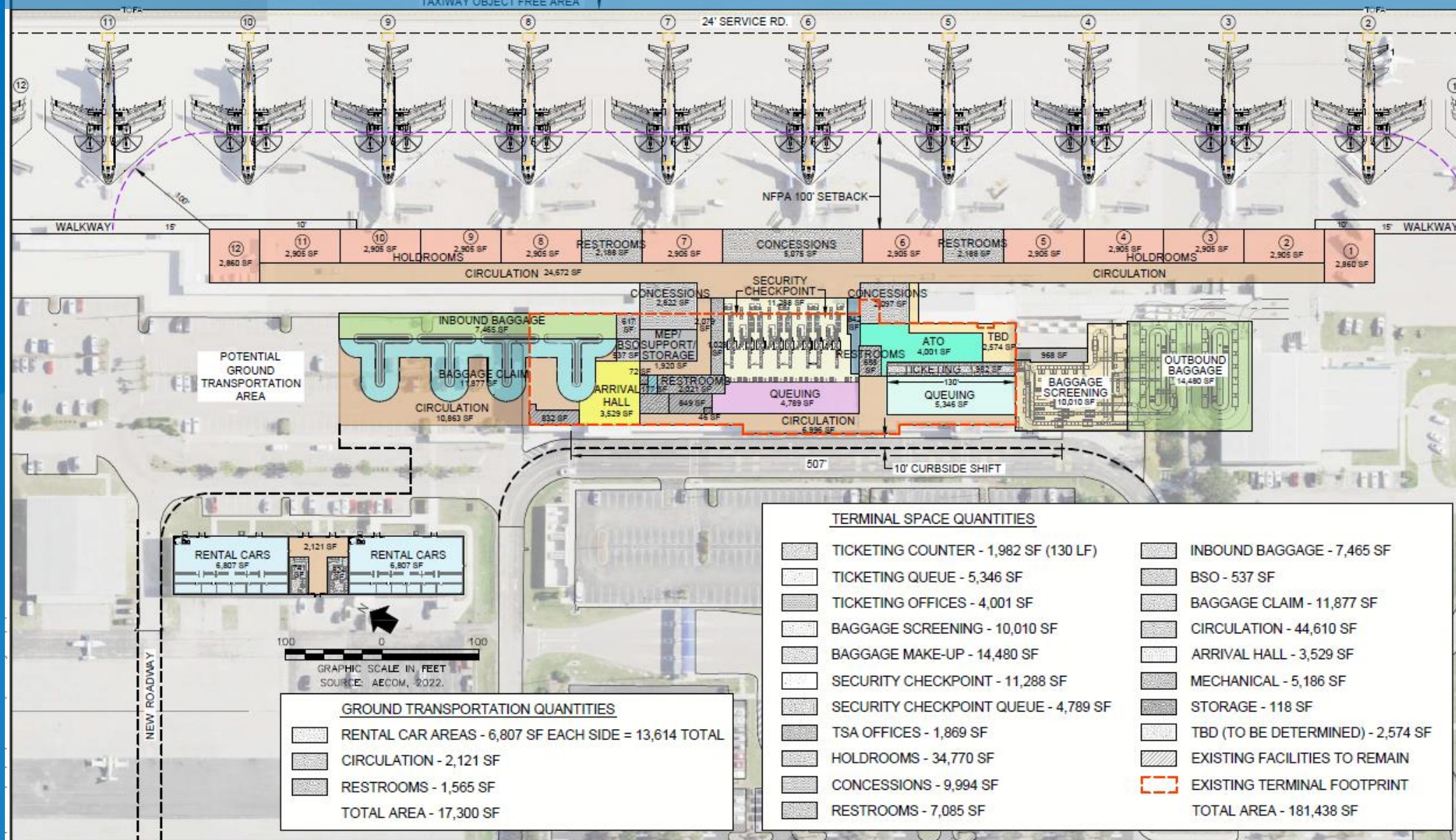
MARCH 2023 ROUTES

ABE	MDW
ALB	MLI
ATW	MSP
AVL	OMA
BLV	PBG
BNA	PIA
BWI	PIT
CAK	PSM
CID	PVD
CVG	RFD
DAY	RIC
DSM	ROC
ELM	SBN
FNT	SDF
FSD	SGF
FWA	SPI
GRR	STC
IAG	SWF
IND	SYR
LCK	TOL
LEX	TVC
MCI	TYS
MDT	USA





# BAILEY TERMINAL EXPANSION PLANS







# GENERAL AVIATION





# NEW PGD AIR CENTER – FBO, OFFICES, FLIGHT SCHOOLS





# PGD AIR CENTER – [www.PGDAirCenter.com](http://www.PGDAirCenter.com)





[illegible]





# OPPORTUNITIES ON THE HORIZON





# ON THE HORIZON

- ▲ Sunseeker Resort – October 2023
- ▲ Florida International Air Show – November 4-5, 2023
- ▲ MotoBros Lease – Motocross track in design
- ▲ Continued construction & improvements to structures, roads and airfield
- ▲ Rosati's Pizza – Opening Fall at PGD Air Center



**Gary Duncan**  
**Chief Operating Officer**

[GDuncan@FlyPGD.com](mailto:GDuncan@FlyPGD.com)  
941-639-1101 x 104







# Upcoming Meetings

**Board Meeting**

**June 21, 2023**

**3:30 p.m.**

**Business and Economic Development  
Committee Meetings**

**August 10, 2023**

**3:00 p.m.**

